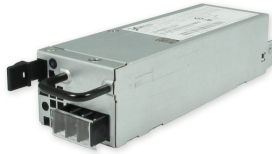
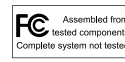


## YM-2151FBR



### Feature

- 150.0 (L) x 50.5 (W) x 40.0 (H) mm
- N+1 Redundant
- Support PMBus 1.1
- Application for IPC/Storage/Embedded server/Networking



INPUT	
Input Voltage	-36 - -72VDC
Input Current	1.8A / -36VDC, 6.0A / -72VDC
Inrush Current	100A max at -72VDC
Earth Leakage Current	1.5mA max for each power supply at -72VDC

GENERAL	
Efficiency	85% at Max load of -48VDC
Power Density	
MTBF	100 kHrs per Bellcore SR-332 at 25°C ambient

ENVIRONMENTAL	
Operating Temperature	-5 to 50°C
Operating Humidity	85% RH, Non-condensing
Storage Temperature	-40°C to +70 °C
Operating Altitude	Sea level to 5,000 M
Shock Operating	10G, no malfunction
Non-Operating	50G Trapezoidal Wave, Velocity change 4.3m/sec
Vibration Operating	0.01G <sup>2</sup> /Hz at 10Hz, 0.02G <sup>2</sup> /Hz at 20Hz
Non-Operating	0.02G <sup>2</sup> /Hz form 20Hz to 1kHz

EMC & SAFETY	
Emissions	EN55022, class B Conducted / EN55022, class B Radiated
Harmonic Currents	EN61000-3-2
Voltage Flicker	EN61000-3-3
EFT/Burst	EN61000-4-4
Surge	EN61000-4-5
Conducted Immunity	EN61000-4-6
Safety Approvals	UL/cUL, TUV, CB, CE, CCC, FCC

Output	Minimum Load	Maximum Load	Condition	Ripple & Noise
+12V	0A	12.5A		120mV p-p
+5Vsb	0A	3A		50mV p-p

## YM-2151FBR

